

Portable Tracker Software Upgrade Guide

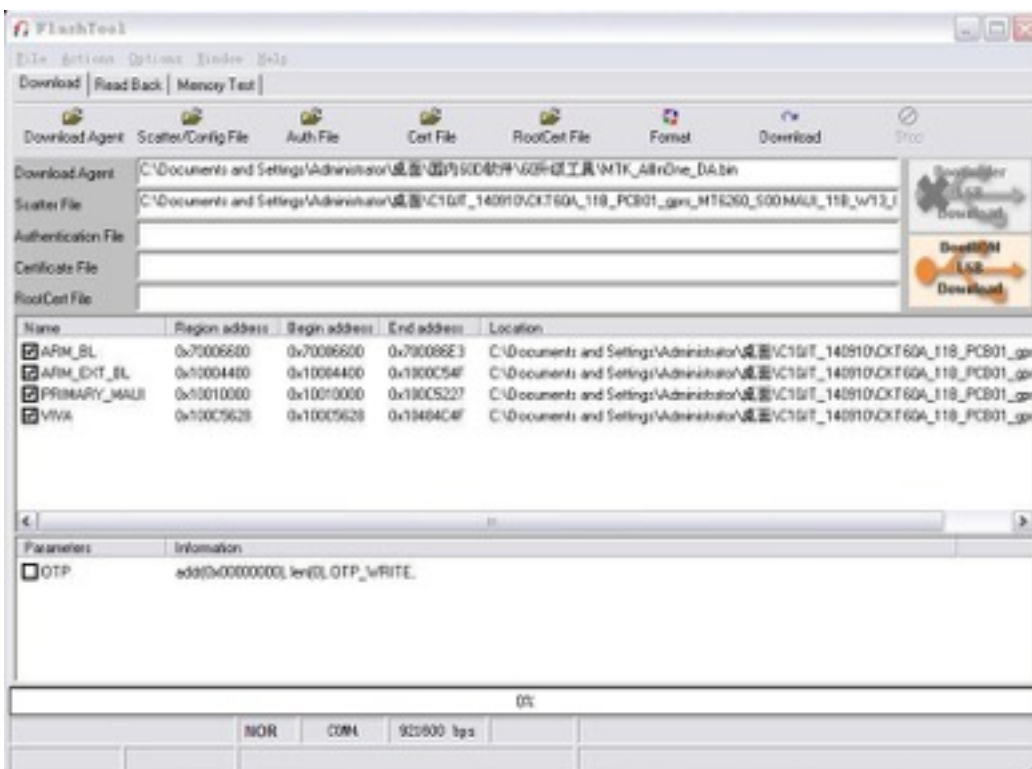
(1) Preparation

1.1 Connect device with PC through the update cable. Take Sim card out

1.2 Install the Driver SoGware “PL-2303 Driver Installer.exe”

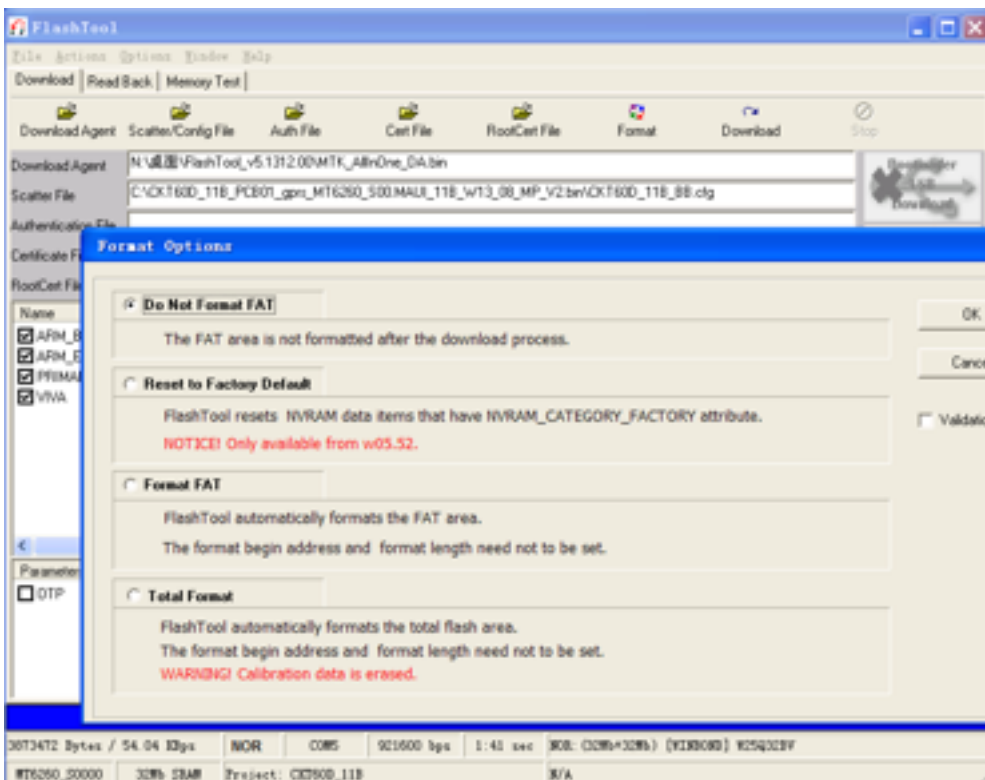
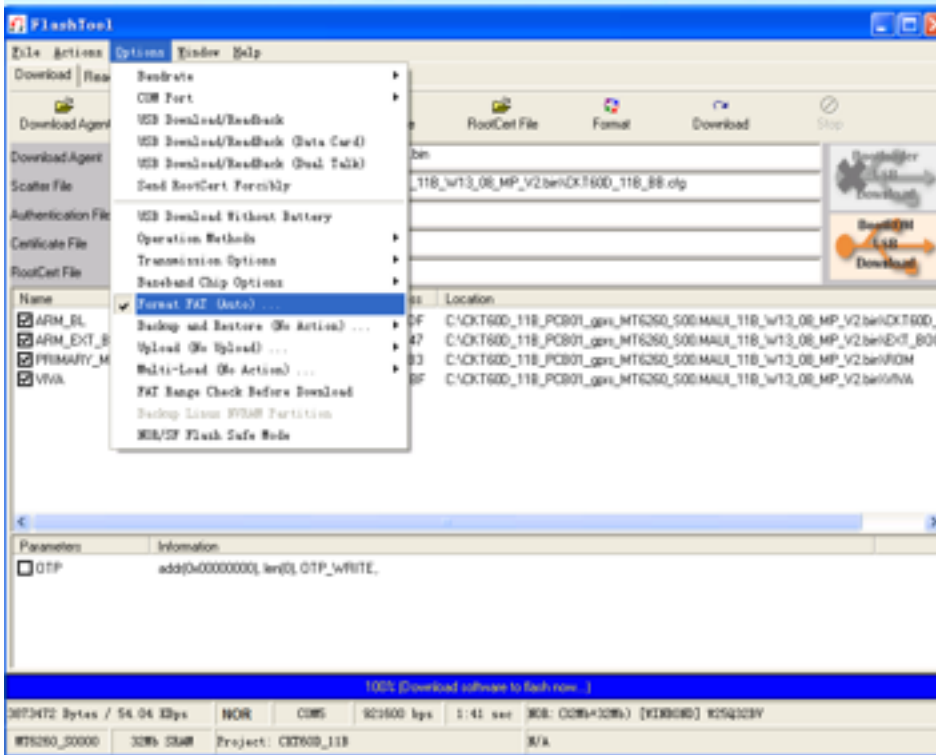
(2) Burning process

1. Run Flash_tool.exe, Picture show as below (Pic-1)

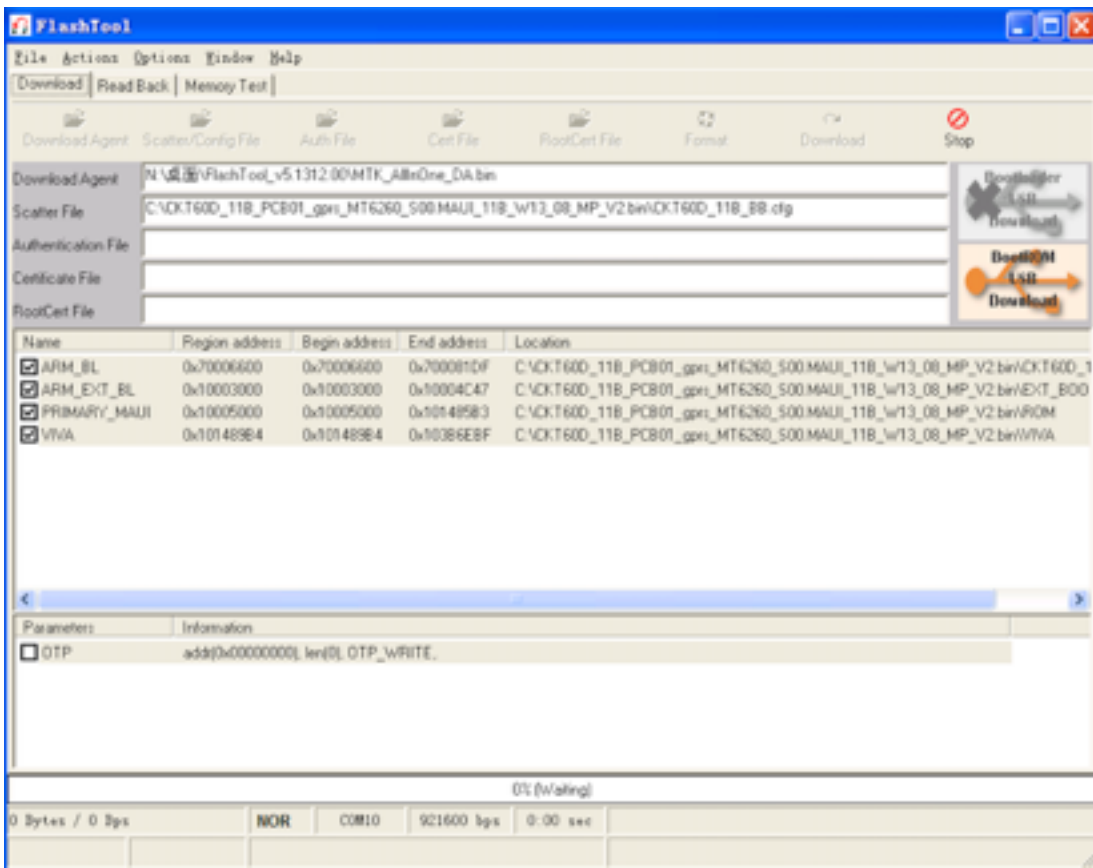



Pic-1

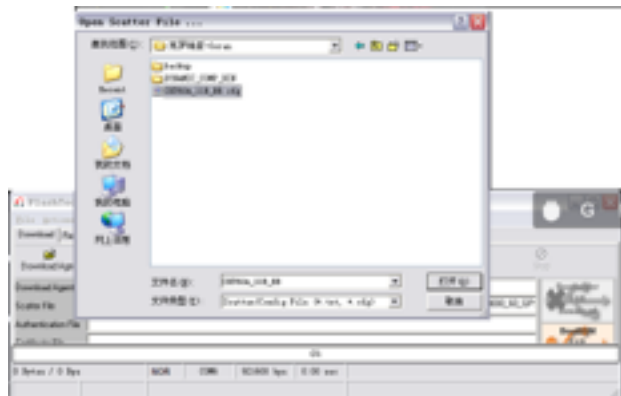
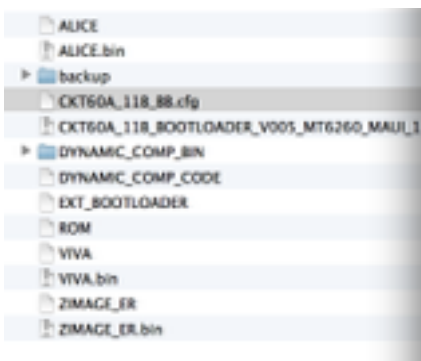
2.2 Select Option, Unclick Format FAT (Pic-2-3)



2. Click ,  and select "MTK_AllInOne_DA.bin", (Pic-4)

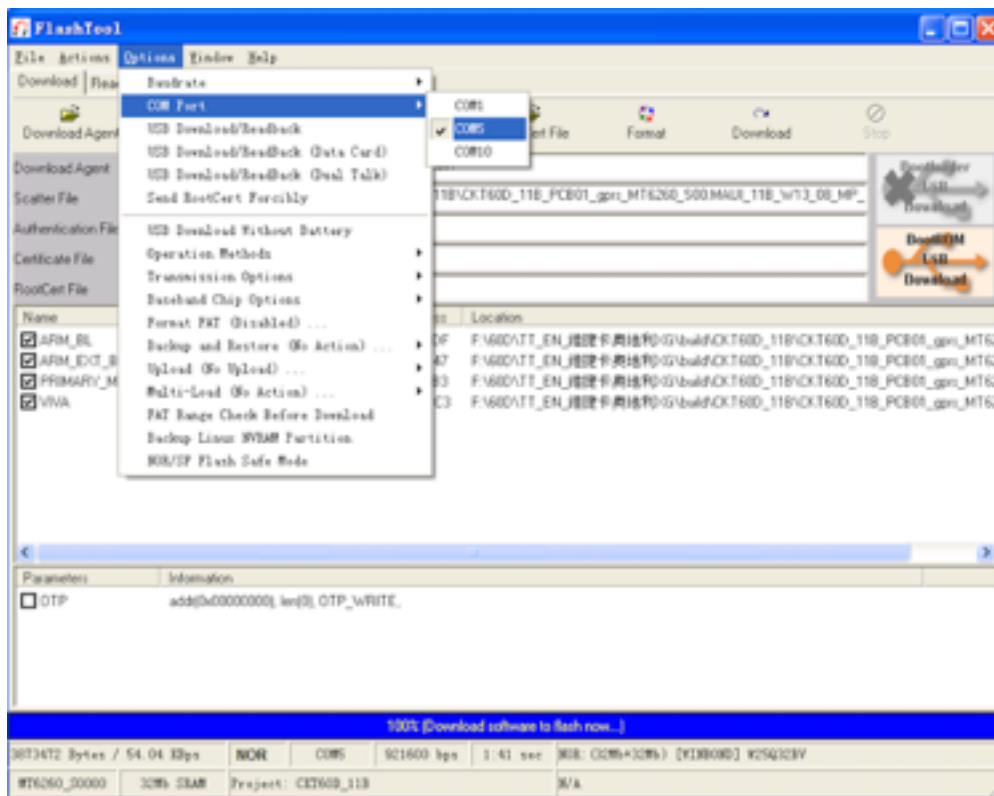


3. Click  and select the CKT60AXXX.cfg file from the software folder, Picture shown as below (Pic-5)

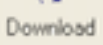


Pic-3

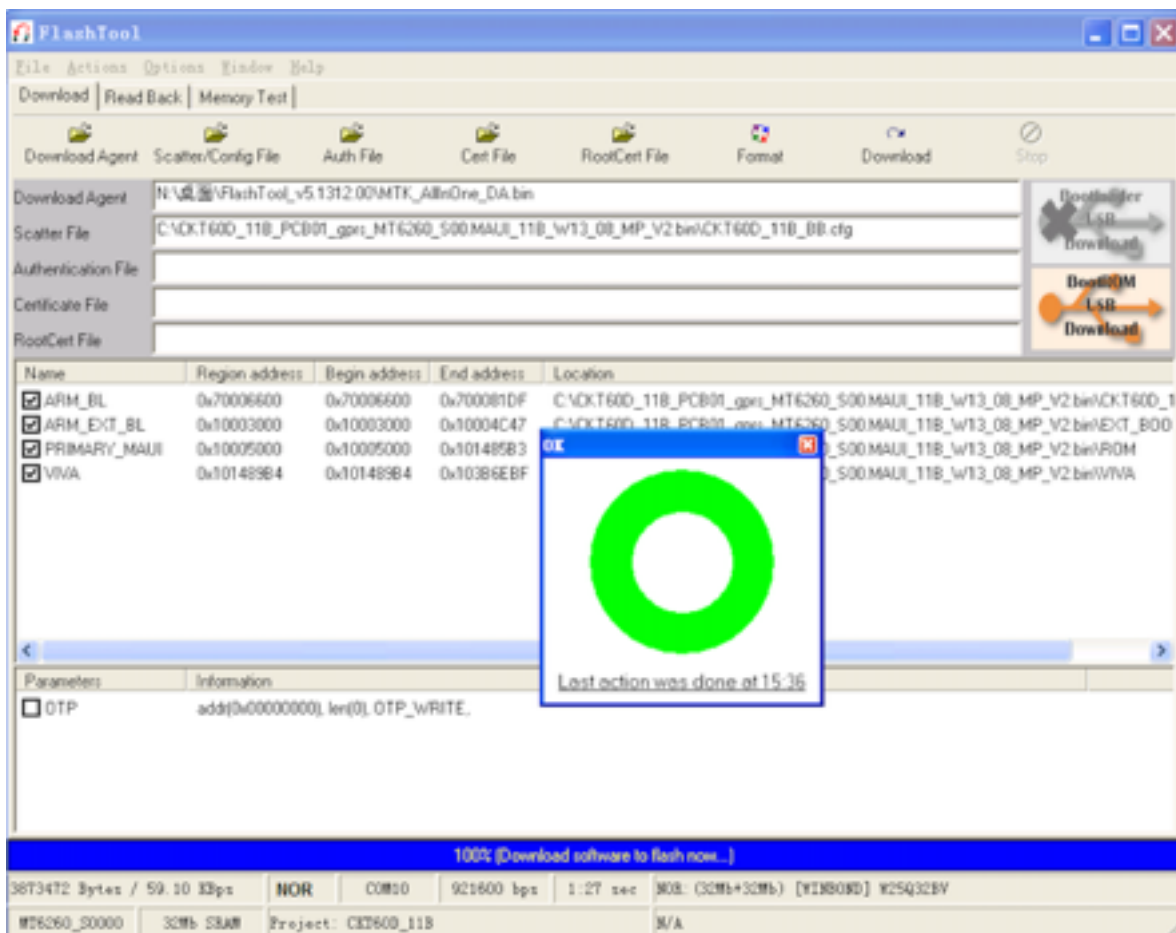
5. Select the second the COM on the COM port list (Pic-6)



Pic-4

6. Click  and then INSERT SIM CARD

7. Software burning finished (Pic-7)



8. Disconnect data cable; Take the SIM card out and Put it in again to restart the device.

(3) Note.

1. The data cable must be well connecting, otherwise, you will see warning as following picture (Pic-8)

